

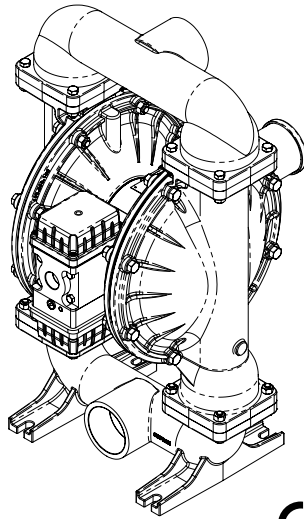
**WARREN  
RUPP®**

Quality System  
ISO9001 Certified

Environmental  
Management System  
ISO14001 Certified

**IDEX**  
FLUID & METERING

US Patent # 6,241,487  
US Patent # 7,521,921 Pending



**SANDPIPER®**

A WARREN RUPP PUMP BRAND

**RS30 Metallic  
AirVantage  
Design Level 1  
Ball Valve**

**Air-Operated  
Double Diaphragm Pump**

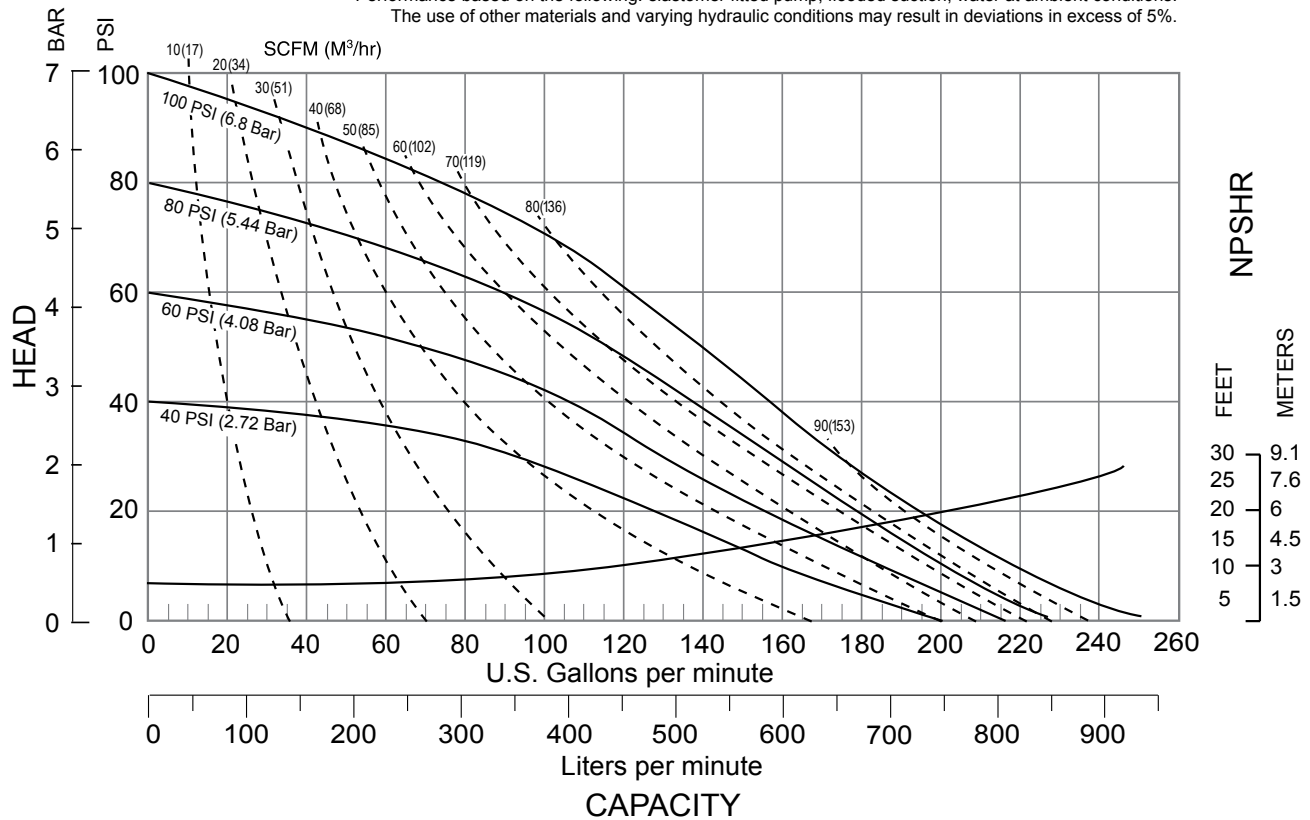
ENGINEERING, PERFORMANCE  
& CONSTRUCTION DATA



INTAKE/DISCHARGE PIPE SIZE	CAPACITY	AIR VALVE	SOLIDS-HANDLING	HEADS UP TO	DISPLACEMENT/STROKE
3" NPT (internal) 3" BSP Tapered (internal)	0 to 245 gallons per minute (0 to 927 liters per minute)	No-lube, no-stall design	Up to .38 in. (9.6mm)	125 psi or 289 ft. of water (125 psi or 8.6 bar inlet) (8.6 bar or 88 meters)	1.00 Gallon / 3.78 liter

**RS30 Metallic Performance Curve**

Performance based on the following: elastomer fitted pump, flooded suction, water at ambient conditions.  
The use of other materials and varying hydraulic conditions may result in deviations in excess of 5%.



SANDPIPER® pumps are designed to be powered only by compressed air.

Warren Rupp, Inc. • A Unit of IDEX Corporation • 800 N. Main Street • Mansfield, OH 44901 USA  
Tel: 419-524-8388 • Fax: 419-522-7867 • www.warrenrupp.com

## Explanation of Pump Nomenclature, RS30 Metallic · Design Level 1· Ball Valve

MODEL	Pump Brand	Pump Size	Check Valve Type	Design Level	Wetted Material	Diaphragm/ Check Valve Materials	Check Valve Seat	Non-Wetted Material Options	Porting Options	Pump Style	Pump Options	Kit Options	Shipping Weight lbs. (kg)
RS30B1ABBANAS00	RS	30	B	1	A	B	B	A	N	A	S	00	141 (64)
RS30B1AEEANAS00	RS	30	B	1	A	E	E	A	N	A	S	00	141 (64)
RS30B1AGTANAS00	RS	30	B	1	A	G	T	A	N	A	S	00	141 (64)
RS30B1ANNANAS00	RS	30	B	1	A	N	N	A	N	A	S	00	141 (64)
RS30B1A1EANAS00	RS	30	B	1	A	1	E	A	N	A	S	00	141 (64)
RS30B1IBBANAS00	RS	30	B	1	I	B	B	A	N	A	S	00	240 (109)
RS30B1IEEANAS00	RS	30	B	1	I	E	E	A	N	A	S	00	240 (109)
RS30B1IGTANAS00	RS	30	B	1	I	G	T	A	N	A	S	00	240 (109)
RS30B1INNANAS00	RS	30	B	1	I	N	N	A	N	A	S	00	240 (109)
RS30B1I1EANAS00	RS	30	B	1	I	1	E	A	N	A	S	00	240 (109)
RS30B1SBBANAS00	RS	30	B	1	S	B	B	A	N	A	S	00	219 (99)
RS30B1SGTANAS00	RS	30	B	1	S	G	T	A	N	A	S	00	219 (99)
RS30B1SNNANAS00	RS	30	B	1	S	N	N	A	N	A	S	00	219 (99)
RS30B1S1EANAS00	RS	30	B	1	S	1	E	A	N	A	S	00	219 (99)
RS30B1HGTANAS00	RS	30	B	1	H	G	T	A	N	A	S	00	260 (118)

**Note: Models listed in the table are for reference only. See nomenclature below for other models.**

### Pump Brand

RS= SANDPIPER®  
AirVantage

### Pump Size

30= 3"

### Check Valve Type

B = Ball

### Design Level

1 = Design Level

### Wetted Material

A = Aluminum  
I = Cast Iron  
S = Stainless Steel  
H = Alloy C

### Diaphragm Check Valve Materials

1 = Santoprene/Santoprene  
2 = PTFE-Santoprene/PTFE  
B = Nitrile/Nitrile  
C = FKM/PTFE  
E = EPDM/EPDM  
I = EPDM/Santoprene  
G = PTFE-Neoprene/PTFE  
N = Neoprene/Neoprene

### Check Valve Seat

A = Aluminum  
B = Nitrile  
C = Carbon Steel  
E = EPDM  
N = Neoprene  
S = Stainless Steel  
T = PTFE  
V = FKM

### Non-Wetted Material Options

A = Painted Aluminum  
J = Painted Aluminum w/PTFE Coated Hardware  
Y = Painted Aluminum with Stainless Steel Hardware

### Porting Options

N = NPT Threads  
B = BSP (Tapered) Threads  
A = ANSI Flange  
D = DIN Flange  
R = Raised Face 150# Threaded ANSI Flange

### Pump Style

A = Anodized Aluminum  
Air Saving Valve

### Pump Options

P = 110 VAC plug-in Electrical Hook-up with High Flow Metal Muffler  
S = Self-Contained Electrical Generation with High Flow Metal Muffler

### Kit Options

00.= None  
P0.= 10-30VDC Pulse Output Kit  
P2.= 110/120 or 220/240VAC Pulse Output Kit  
SP.= Stroke Indicator Pins

**CAUTION! Operating temperature limitations are as follows:**

<b>Materials</b>	<b>Operating Temperatures</b>	
	Maximum	Minimum
<b>Nitrile:</b> General purpose, oil-resistant. Shows good solvent, oil, water and hydraulic fluid resistance. Should not be used with highly polar solvents like acetone and MEK, ozone, chlorinated hydrocarbons and nitro hydrocarbons.	190°F 88°C	-10°F -23°C
<b>EPDM:</b> Shows very good water and chemical resistance. Has poor resistance to oil and solvents, but is fair in ketones and alcohols.	280°F 138°C	-40°F -40°C
<b>Neoprene:</b> All purpose. Resistant to vegetable oil. Generally not affected by moderate chemicals, fats, greases and many oils and solvents. Generally attacked by strong oxidizing acids, ketones, esters, nitro hydrocarbons and chlorinated aromatic hydrocarbons.	200°F 93°C	-10°F -23°C
<b>Santoprene®:</b> Injection molded thermoplastic elastomer with no fabric layer. Long mechanical flex life. Excellent abrasion resistance.	275°F 135°C	-40°F -40°C
<b>Virgin PTFE:</b> Chemically inert, virtually impervious. Very few chemicals are known to react chemically with PTFE: molten alkali metals, turbulent liquid or gaseous fluorine and a few fluoro-chemicals such as chlorine trifluoride or oxygen difluoride which readily liberate free fluorine at elevated temperatures.	220°F 104°C	-35°F -37°C
<b>FKM (Fluorocarbon):</b> Shows good resistance to a wide range of oils and solvents; especially all aliphatic, aromatic and halogenated hydrocarbons, acids, animal and vegetable oils. Hot water or hot aqueous solutions (over 70°F) will attack FKM.	350°F 177°C	-40°F -40°C
<b>Polypropylene:</b>	180°F 82°C	32°F 0°C

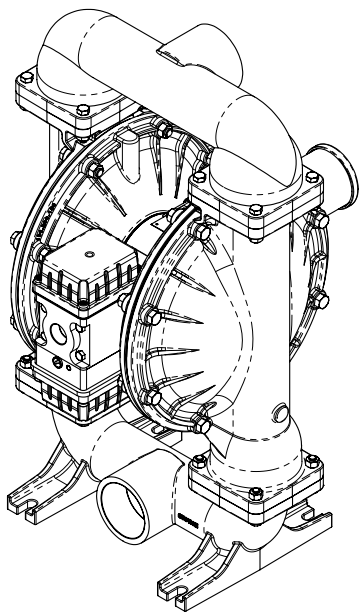
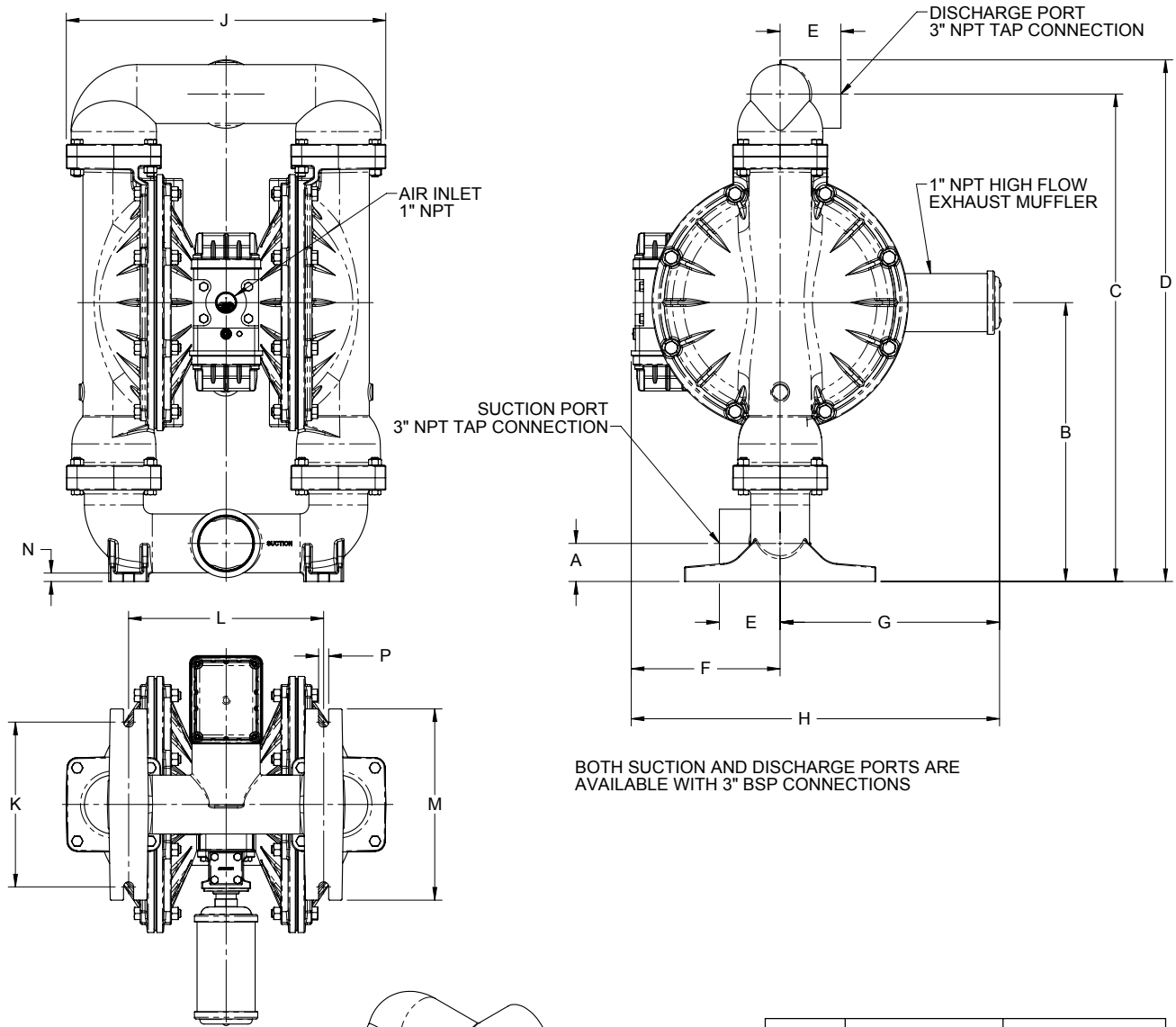
For specific applications, always consult The Warren Rupp Chemical Resistance Chart

©Copyright 2010. All rights reserved.

®Santoprene is a registered tradename of Exxon Mobil Corporation.

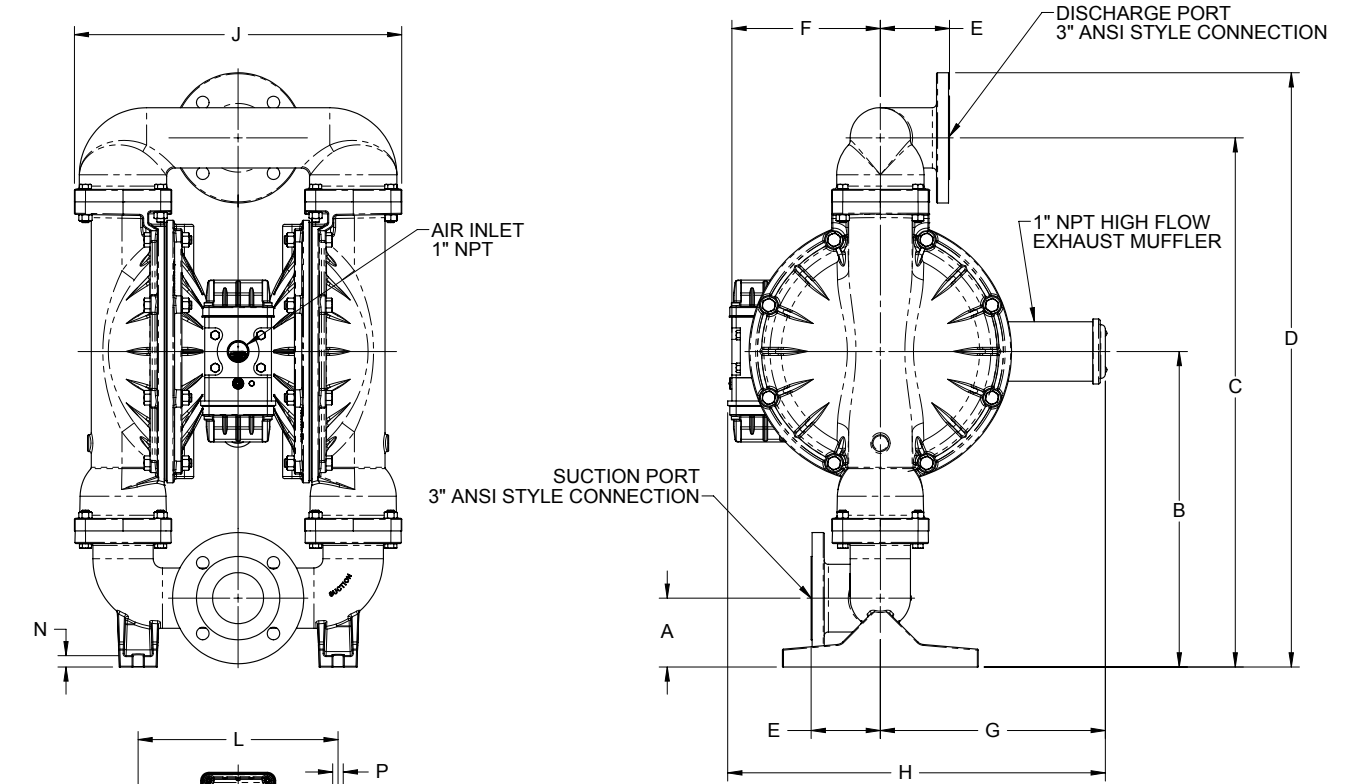
®SANDPIPER and Warren Rupp are registered tradenames of Warren Rupp, Inc.

# Dimensions: RS30 Metallic

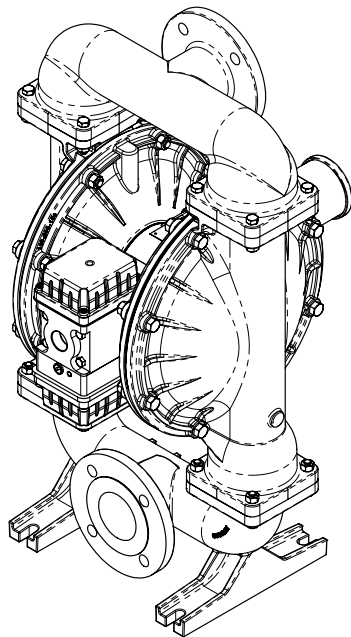


	English ±.125		Metric ±3mm	
	Aluminum Cast Iron	Stainless Alloy "C"	Aluminum Cast Iron	Stainless Alloy "C"
A	2.34		59	
B	17.14	17.26	435	438
C	29.96	30.08	761	764
D	32.07	32.19	815	818
E	3.74		95	
F	9.16		233	
G	13.50		343	
H	22.66		576	
J	19.65		499	
K	10.13		257	
L	12.00		305	
M	11.75		299	
N	.52		13	
P	.62		16	

# Dimensions: RS30 Metallic - Flange



BOTH SUCTION AND DISCHARGE PORTS ARE AVAILABLE WITH 3" DIN STYLE CONNECTIONS



	English ±.125		Metric ±3mm	
	Aluminum Cast Iron	Stainless Alloy "C"	Aluminum Cast Iron	Stainless Alloy "C"
A	4.13	4.25	105	108
B	18.93	19.06	481	484
C	31.75	32.00	806	813
D	35.69	35.82	906	910
E	4.19		95	
F	8.91		226	
G	13.50		343	
H	22.66		576	
J	19.65		499	
K	10.13		257	
L	12.00		305	
M	11.75		299	
N	.52	.69	13	18
P	.62		16	