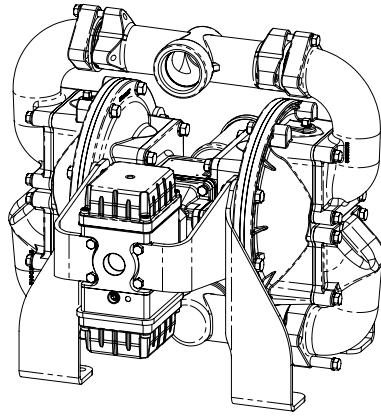


**WARREN
RUPP®**

Quality System
ISO9001 Certified

Environmental
Management System
ISO14001 Certified

IDEX
FLUID & METERING



SANDPIPER®

A WARREN RUPP PUMP BRAND

**RHDF2
Heavy Duty Flap Valve
AirVantage
Design Level 1**

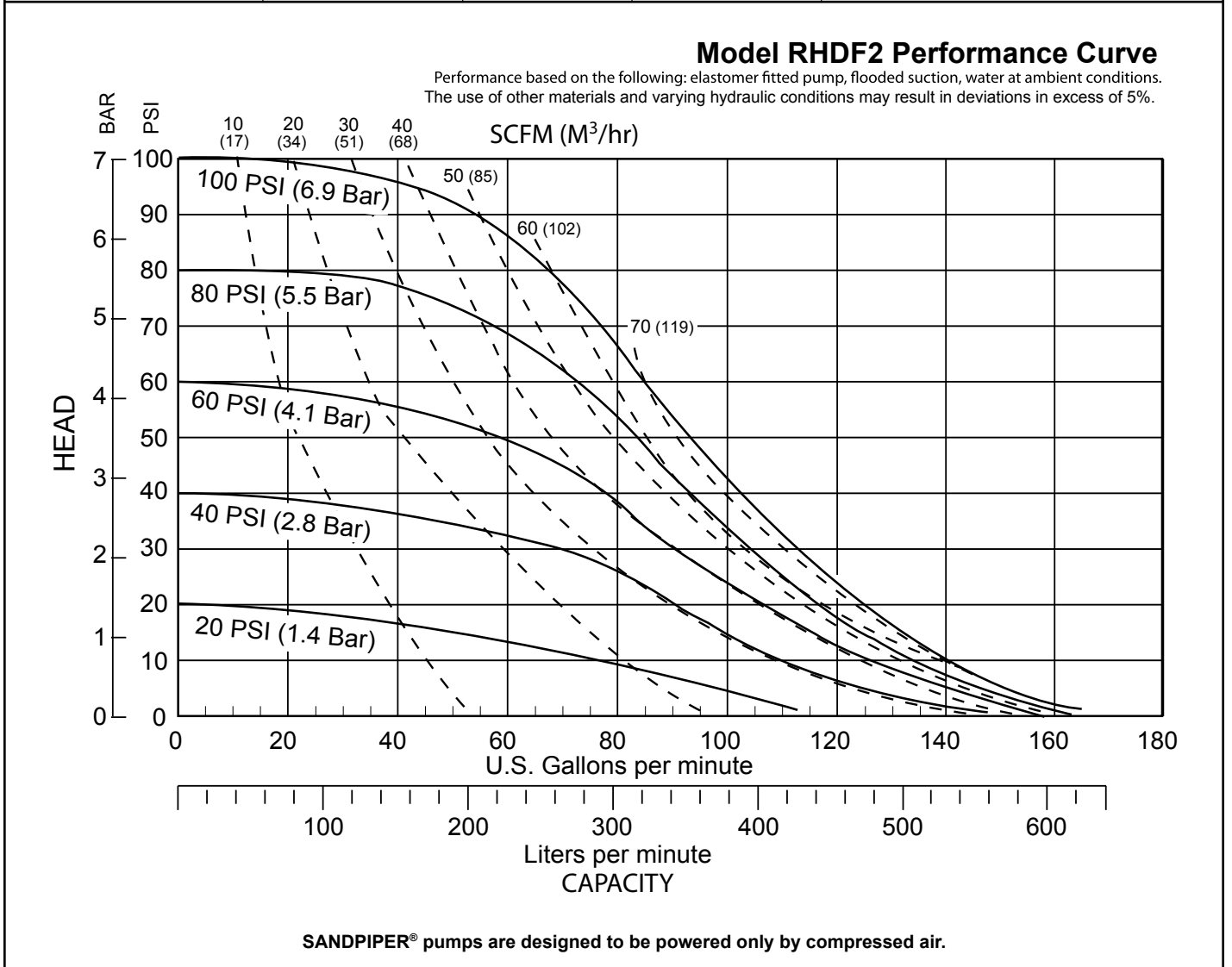
**Air-Operated
Double Diaphragm Pump**

ENGINEERING, PERFORMANCE
& CONSTRUCTION DATA

US Patent # 6,241,487
US Patent # 7,521,921 Pending



INTAKE/DISCHARGE PIPE SIZE	CAPACITY	AIR VALVE	SOLIDS-HANDLING	HEADS UP TO	DISPLACEMENT/STROKE
2" (50mm) NPT (F)	0 to 165 gallons per minute (0 to 625 liters per minute)	No-lube, no-stall design	Up to 2" (50mm)	125 psi or 289 ft. of water (125 psi or 8.6 bar inlet) (8.6 bar or 88 meters)	.48 Gallon / 1.82 liter



Warren Rupp, Inc. • A Unit of IDEX Corporation • 800 N. Main Street • Mansfield, OH 44901 USA
Tel: 419-524-8388 • Fax: 419-522-7867 • www.warrenrupp.com

Explanation of Pump Nomenclature: RHDF2

Materials of Construction

RHDF2	Manifold Elbow	Outer Chamber	Inner Chamber	Inner Diaphragm Plate	Diaphragm Plate	Intermediate Housing	Diaphragm Rod	Valve Seat	Hardware	Flap Diaphragm	Valve Material	Sealing Rings	Shipping Wt. (lbs.)	AirVantage Options
DA-6-A	AL	AL	AL	PS	PS	AL	SS	SS	PS	N	U	N	107	S
DB-6-A	AL	AL	AL	PS	PS	AL	SS	SS	PS	B	B	B	107	S
DV-6-A	AL	AL	AL	PS	PS	AL	SS	SS	PS	V	V	V	107	S
DN-6-A	AL	AL	AL	PS	PS	AL	SS	SS	PS	N	N	N	107	S
DI-6-A	AL	AL	AL	PS	PS	AL	SS	SS	PS	I	I	I	107	S
DP-6-A	AL	AL	AL	PS	PS	AL	SS	SS/I	PS	S	S	I	107	S
DR-6-A	AL	AL	AL	PS	PS	AL	SS	SS	PS	H	H	N	107	S
DA-6-I	CI	CI	AL	PS	PS	AL	SS	SS	PS	N	U	N	150	S
DB-6-I	CI	CI	AL	PS	PS	AL	SS	SS	PS	B	B	B	150	S
DV-6-I	CI	CI	AL	PS	PS	AL	SS	SS	PS	V	V	V	150	S
DN-6-I	CI	CI	V	PS	PS	AL	SS	SS	PS	N	N	N	150	S
DI-6-I	CI	CI	AL	PS	PS	AL	SS	SS	PS	I	I	I	150	S
DR-6-I	CI	CI	AL	PS	PS	AL	SS	SS	PS	H	H	N	150	S
DP-6-I	CI	CI	AL	PS	PS	AL	SS	SS/I	PS	S	S	I	150	S
DA-6-S	‡SS	‡SS	AL	‡SS	PS	AL	SS	SS	PS	N	U	N	157	S
DB-6-S	‡SS	‡SS	AL	‡SS	PS	AL	SS	SS	PS	B	B	B	157	S
DF-6-S	‡SS	‡SS	AL	‡SS	PS	AL	SS	SS	PS	F	F	F	157	S
DV-6-S	‡SS	‡SS	AL	‡SS	PS	AL	SS	SS	PS	V	V	V	157	S
DN-6-S	‡SS	‡SS	AL	‡SS	PS	AL	SS	SS	PS	N	N	N	157	S
DI-6-S	‡SS	‡SS	AL	‡SS	PS	AL	SS	SS	PS	I	I	I	157	S
DP-6-S	‡SS	‡SS	AL	‡SS	PS	AL	SS	SS/I	PS	S	S	I	157	S
DR-6-S	‡SS	‡SS	AL	‡SS	PS	AL	SS	SS	PS	H	H	N	157	S

Meanings of Abbreviations:

A = Compressed Fibre
AL = Aluminum
B = Nitrile
CI = Cast Iron

DC = Die Cast
H = Hytrel®
I = EPDM
N = Neoprene

PS = Plated Steel
S = Santoprene®
SS = Stainless Steel
V = FKM (Fluorocarbon)

SS/I = Stainless Steel seat w/EPDM O-Ring
T = PTFE
U = Urethane
F = FDA Accepted White Nitrile

S = Self Contained Electrical Generator
P = 100 VAC Electrical Connector

‡ **CF-8M Stainless Steel** equal to or exceeding ASTM specification A743 for corrosion resistant iron chromium, iron chromium nickel, and nickel based alloy castings for general applications. Commonly referred to as 316 Stainless Steel in the pump industry.

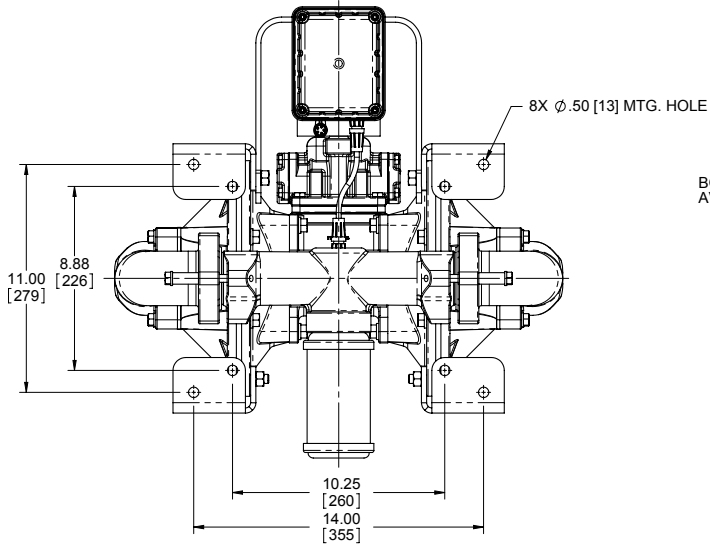
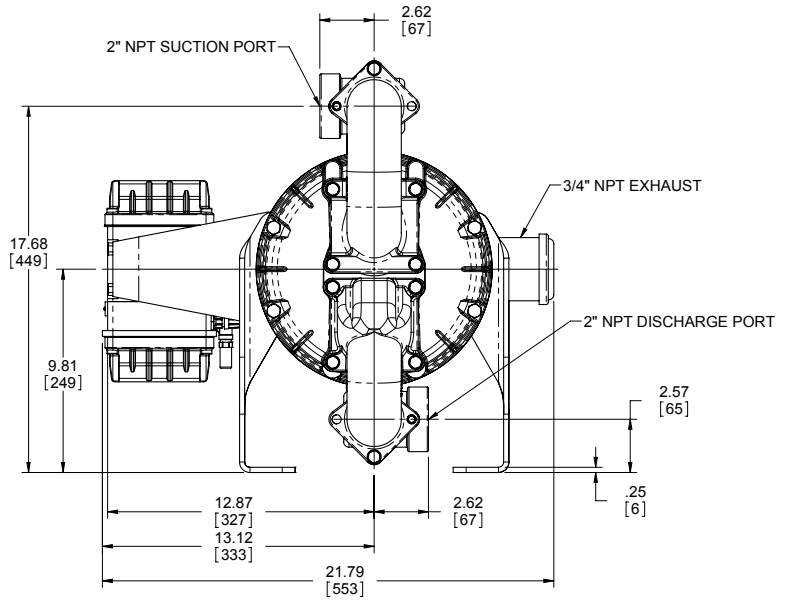
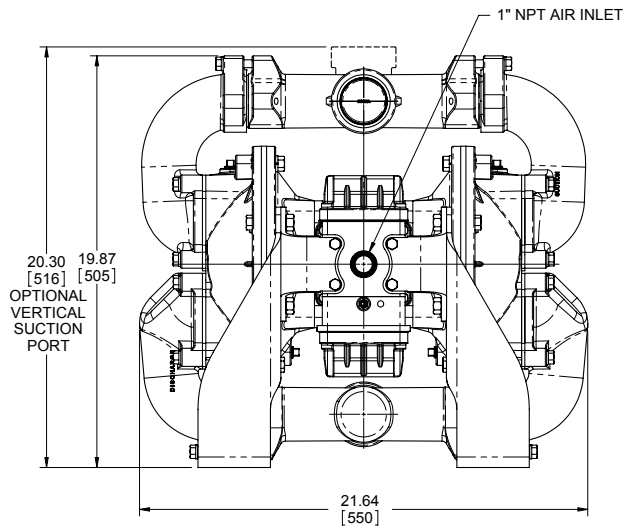
CAUTION! Operating temperature limitations are as follows:

Materials	Operating Temperatures	
	Maximum	Minimum
Nitrile: General purpose, oil-resistant. Shows good solvent, oil, water and hydraulic fluid resistance. Should not be used with highly polar solvents like acetone and MEK, ozone, chlorinated hydrocarbons and nitro hydrocarbons.	190° F 88° C	-10° F -23° C
EPDM: Shows very good water and chemical resistance. Has poor resistance to oil and solvents, but is fair in ketones and alcohols.	280° F 138° C	-40° F -40° C
Neoprene: All purpose. Resistant to vegetable oil. Generally not affected by moderate chemicals, fats, greases and many oils and solvents. Generally attacked by strong oxidizing acids, ketones, esters, nitro hydrocarbons and chlorinated aromatic hydrocarbons.	200° F 93° C	-10° F -23° C
Santoprene®: Injection molded thermoplastic elastomer with no fabric layer. Long mechanical flex life. Excellent abrasion resistance.	275° F 135° C	-40° F -40° C
Virgin PTFE: Chemically inert, virtually impervious. Very few chemicals are known to react chemically with PTFE- molten alkali metals, turbulent liquid or gaseous fluorine and a few fluoro-chemicals such as chlorine trifluoride or oxygen difluoride which readily liberate free fluorine at elevated temperatures.	220° F 104° C	-35° F -37° C
FKM (Fluorocarbon): Shows good resistance to a wide range of oils and solvents; especially all aliphatic, aromatic and halogenated hydrocarbons, acids, animal and vegetable oils. Hot water or hot aqueous solutions (over 70°F) will attack FKM.	350° F 177° C	-40° F -40° C
Polypropylene:	180° F 82° C	32° F 0° C
UHMW Polyethylene:	180° F 82° C	32° F 0° C
HYTREL® Good on acids, bases, amines and glycols at room temperature.	190° F 88° C	-10° F -23° C

Santoprene is a registered tradename of Exxon Mobil Corp.
Hytrel is a registered tradename of E.I. du Pont.

Dimensions: RFDF2

Dimensions are $\pm 1/8"$
 Figures in parenthesis = millimeters



BOTH SUCTION AND DISCHARGE PORTS ARE AVAILABLE WITH 2" BSP CONNECTIONS

